

## SealBoss® P2002 Injection Pump

**Compact Design**

**Electric High Pressure Injection Pump**

- Easy To Use
- Easy To Clean
- Easy To Maintain
- Modular, Compact & Sturdy Design
- Single Component
- Electric Drill Operated
- Heavy Duty For Daily Use
- Pressure Gauge, Hose Set, Hopper Included
- Recommended For Beginners & Injection Pros
- > 5000 PSI Injection Pressure Possible



The **SealBoss® P2002 Pump** features a very compact design with integrated stand.

This extremely lightweight and powerful injection pump can be used for most of the **SealBoss®** polyurethane and epoxy injection line products with viscosities between 10 and 1000 cps. Call your **SealBoss®** technician for details. Suitable for mid-size jobs and daily use this is the perfect machine for waterproofing contractors performing commercial work and residential injection. With this pump it is a snap to get in and out of basements and confined areas as found on many job sites.

This pump is of professional grade quality for every day use. The output and pressure are exceptional for a machine of this size. The modular design keeps maintenance cost low and allows for easy cleaning.

Parts can be replaced by the savvy contractor to keep downtime at an absolute minimum.

This pump is powered by a Metabo electric drill which is sold separately by **SealBoss®**. The drill offers a variable speed adjustment to adjust material volume and pressure.

North America: Standard Metabo drill 110V sold separately.

International Orders: Special order Metabo drill 220V (lead time and cost subject to availability at time of order) or voltage converter available on request. Please consult with your SealBoss Technician.

Contact your SealBoss Technician to confirm that your product is suitable for use with this machine.

### Technical Data:

Max. pressure	: > 5000 psi
Flowrate	: ~ 1 quart/min / 1l/min
Weight	: 8.5 lbs
Typical Product	
Viscosity	: 50-800cps

Recommended drill: Metabo, call for specifications  
Hose set included.  
Electric Drill & packers sold separately



## SealBoss® P2002 Injection Pump

**Compact Design**

## Electric High Pressure Injection Pump

### Contents

1. P2002 Injection Pump.
2. Metabo Electric Drill is optional, 110V or 220V (Special Order)
3. Wrench Set
5. Pressure Hose Set With Coupler

### READ CAREFULLY BEFORE USING YOUR P2002 INJECTION MACHINE

#### General Information:

Your pump has been tested during a trial run and pressure test to ensure highest quality control. You might find some residue of hydraulic oil in the system and some residue in the packaging. This is normal and does not impair operation.

#### Getting Started:

The pump is delivered ready for operation.

The drill is sold separately and might not be part of the package if not specifically ordered.

Proceed as follows: Screw the pressure hose into front of the pump and tighten firmly. Introduce the electronic drill to the drill holding device. Then tighten the clamping ring (Snug, but not excessively).

**! Use CLOCKWISE Rotation Setting On Drill only!**

**! Never pump water! Do not run the pump dry!**

**Your Pump is now ready for operation!**

**! Caution! This Pump may create very high injection pressures in excess of 6000 psi. Extremely high pressures can cause damage to attached hoses, valves etc. and can also cause damage in the structure to be injected. Sudden ruptures or leaks in the delivery systems may be hazardous to your health and can cause injury or death. Make sure that the pump and attached hoses and fittings are connected tightly and are in as new condition at any given time during operation.**

**The equipment is designed for professional use only. Please observe caution at any time when operating this machine to avoid serious injuries.**

#### Operation:

Use the Metabo drill as supplied by us for best results. Do NOT use Drill in Hammer - Drill setting (if applicable). Use a very low speed to start the pumping process. If you are not experienced with this kind of injection pump, we suggest that you perform tests with hydraulic oil or resin without added hardener, to get used to handling of the machine. Once the desired working pressure is obtained, set the dial switch of the electronic drill so that this pressure will not be exceeded. In regular injection procedures your injection pressure should be well below the 400 bar mark. Please follow the instructions of the resin supplier carefully. Make sure that no foreign particles will enter the pump with the resin. This will help to prolong the service life of your pump.

#### Maintenance:

Immediately after use, clean the pump with SealBoss R70 Pump Flush. This product is not harmful to seals and hoses and may be left in the system as lubrication. Solvents should only be used briefly for the initial flush to cut thicker residue - Follow all safety guidelines. Do not leave solvent in the system as it is caustic towards seals and hoses. Fill up the resin tank (2), clean the inner walls, and pump cleaner out. Repeat this several times.

#### Safety Instruction:

- Protection while working
- Follow product data sheets and MSDS; wear protective goggles and protective gloves.

### P2002 Piston Replacement Procedure

- 1) Remove the 3 allen screws from the front of the gauge seat. Note the order of ball/spring when removing the gauge seat for reassembly. Ball faces piston.
- 2) Clean ball/spring chamber – confirm no PU build up
- 3) Remove 4 allen screws on front plate of the pump (front plate also seats the hopper threading)
- 4) Note the length of screws removed from the face plate – 2 are long, and 2 are shorter.
- 5) Remove set screw from side of the front plate to release the piston (the entire front plate can now be pulled off)
- 6) Loosen the brass locking nut at the base of the piston shaft
- 7) Unscrew piston from the pump. The entire piston assembly can now be removed
- 8) Screw / attach the new piston kit (be sure to set piston depth at 1.5 threads showing Accuracy of piston depth is very important!)
- 9) Tighten brass locking nut once again
- 10) Be sure to orient piston assembly to have material flow chamber facing the hopper and recessed hole for set screw facing the correct side.
- 11) Reassemble the front plate, allen screws, and ball/spring assembly
- 12) Pressure test the pump with R70 pump flush prior to filling with PU



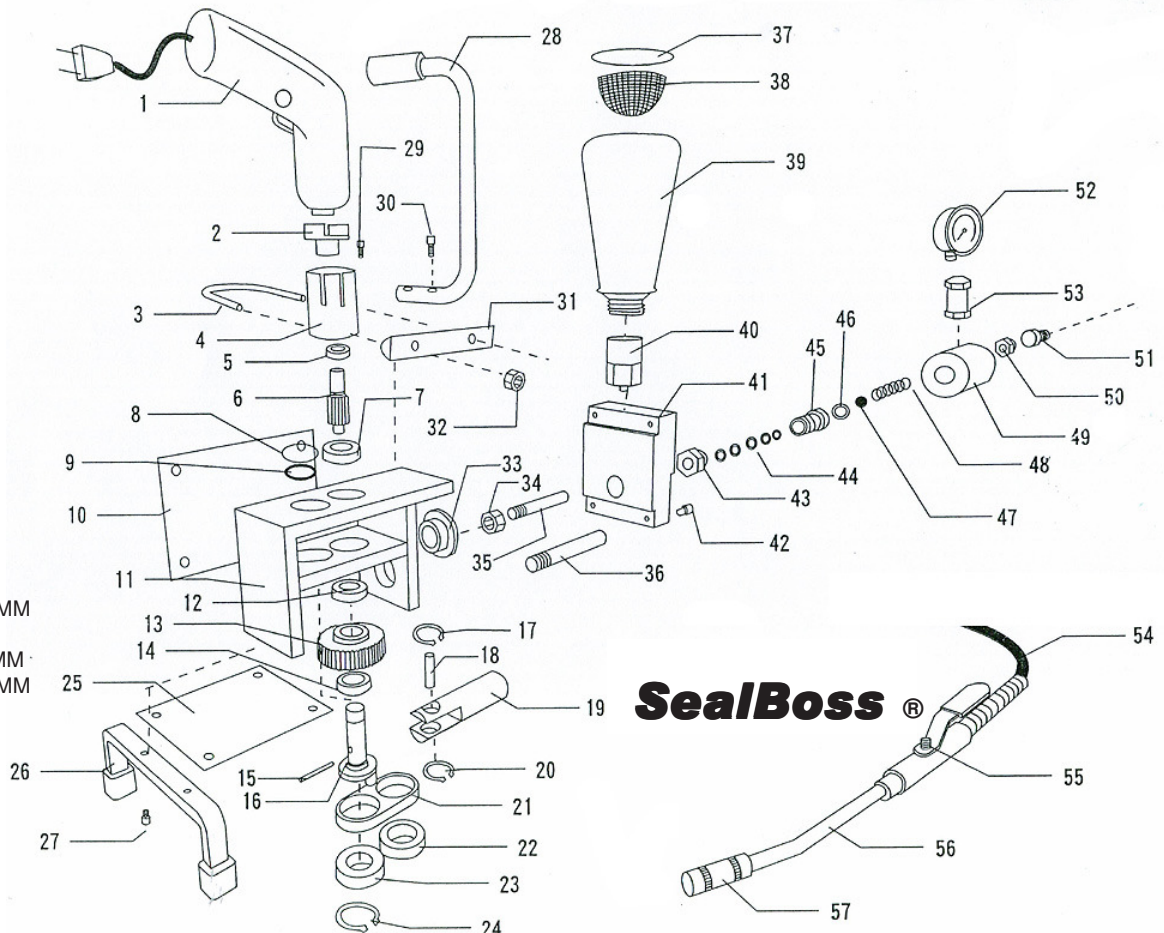
## SealBoss® P2002 Injection Pump

Compact Design

## Electric High Pressure Injection Pump

### Parts List

- 1 IMPACT DRILL
- 2 PITMAN SHAFT
- 3 "U" CLAMP
- 4 SLEEVES
- 5 #6000 BEARING
- 6 PINION
- 7 BEARING
- 8 HUBCAP
- 9 "C" TYPE SNAP
- 10 LATERAL HOUSING
- 11 BODY
- 12 BEARING
- 13 GEARS
- 14 BEARING
- 15 PIN
- 16 ECCENTRIC SHAFT
- 17 "C" TYPE SNAP RING
- 18 JUNCTION PANEL SHAFT
- 19 GUIDE BAR
- 20 "C" TYPE SNAP RING
- 21 JUNCTION PANEL
- 22 #608 BEARING
- 23 #6000 BEARING
- 24 "C" TYPE SNAP RING
- 25 LOWER HOUSING
- 26 LEGS
- 27 SOCKET SCREW M5x25MM
- 28 HANDLE BAR
- 29 SOCKET SCREW M5x12MM
- 30 SOCKET SCREW M5x25MM
- 31 CLAMPING BAR
- 32 5/16" UNC NUT
- 33 BUSH
- 34 SHANK NUT
- 35 PISTON SHANK
- 36 PRESSURE SLEEN NUT
- 37 METAL LID
- 38 FILTER BOWL
- 39 PLASTIC CONTAINER
- 40 ADAPTER
- 41 BUSH BLOCK
- 42 SOCKET SCREW M5x25 MM
- 43 CLAMPING BAR
- 44 O. RING
- 45 PRESSURE FEEDBODY
- 46 BRASS PACKING
- 47 STEEL BALL
- 48 SPRING
- 49 PRESSURE SLEEVES
- 50 NUT
- 51 COMPRESS SCREW
- 52 PRESSURE GAUGE
- 53 DIAPHRAGM PRESSURE GAUGE SEAT
- 54 HIGH PRESSURE HOSE
- 55 AIR VALVE
- 56 BEND SPOUT
- 57 COUPLER



### Limited Warranty Policy and Disclaimer for Products Supplied and/or Distributed by SealBoss Corp.

All recommendations, statements and technical data herein are based on tests we believe to be reliable and correct, but accuracy and completeness of said tests are not guaranteed and are not to be construed as a warranty either expressed or implied. User shall rely on his or her own information and tests to determine suitability of the product for the intended use and user assumes all risk and liability resulting from his or her use of the product. Nothing contained in any supplied materials relieves the user of the obligation to read and follow the warnings and instruction for each product as set forth in the current Technical Data Sheet, product label and Material Safety Data Sheet prior to product use. SealBoss Corp. warrants supplied / distributed products to be free of manufacturing defects. Seller's and manufacturer's sole responsibility shall be to replace that portion of the product of the manufacturer which proves to be defective. There are no other warranties by SealBoss Corp. of any nature whatsoever expressed or implied, including any warranty of merchantability or fitness for a particular purpose in connection with this product. SealBoss Corp. shall not be liable for damages of any sort, including remote or consequential damages resulting from any claimed breach of any warranty whether expressed or implied. SealBoss Corp. shall not be responsible for use of this product in a manner to infringe on any patent or any other intellectual property rights held by others. In addition, no warranty or guarantee is being issued with respect to appearance, color, fading, chalking, staining, shrinkage, peeling, UV damage, excessive temperature exposure, normal wear and tear or improper application by the applicator. Damage caused by abuse, neglect and lack of proper maintenance, acts of nature and / or physical movement of the substrate or structural defects are also excluded from the limited warranty. SealBoss Corp. reserves the right to conduct performance tests on any material claimed to be defective prior to any repairs by owner, general contractor, or applicator. Neither seller nor manufacturer shall be liable to the buyer or any third person for any injury, loss or damage directly or indirectly resulting from use of or inability to use the product. Recommendations and statements other than those contained in a written agreement signed by an officer of the manufacturer shall not be binding upon the manufacturer or seller. SealBoss Corp. reserves the right to change the properties of products without notice.

Revised 201407