

Vertiseal® CE

Two part, cold applied, gun grade polysulphide sealant for sealing vertical movement joints in buildings, and civil engineering structures.

Advantages

- Easily mixed - reactor-in-base aids uniform dispersal during mixing.
- Durable - resistant to environmental pollution, weathering and immersion.
- Flexible - capable of accommodating shear and transverse movement.
- Excellent adhesion - bonds to most common building substrates with appropriate primer.
- Non-slumping - can be used in wide joints up to 40mm wide.
- Low gunning force - easy to apply.

Applications

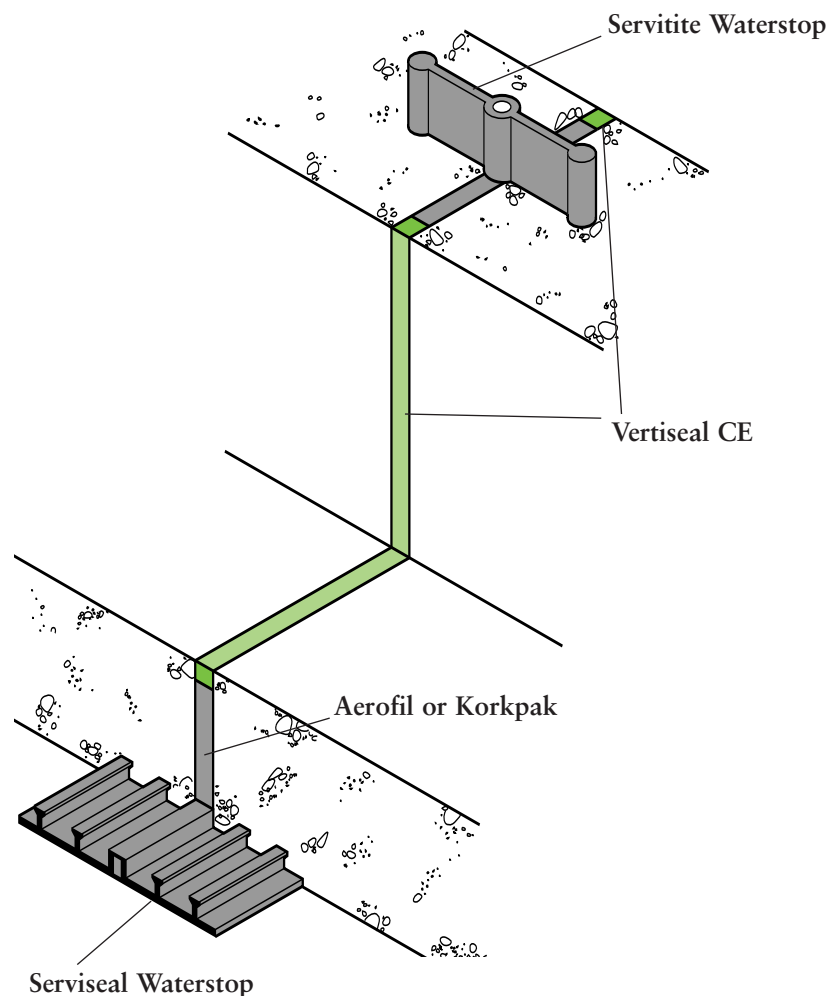
Sealing movement and construction joints in vertical faces of:

- Reinforced concrete structures
- Masonry walls
- Service reservoirs
- Building facades
- Sewage treatment works
- Sea defence works

Vertiseal CE (HC)

Hot Climate (HC) grades are available to suit higher ambient temperatures.

Please contact our Technical Services Department for advice and application guidance.



Details shown are typical illustrations and not working details. For assistance with detailing and problem solving please contact our Technical Department on 01753 692929.

Supply

Vertiseal® CE	2.55 litre mixed volume.
Packaging	4 x 2.5 kg units per carton.
Storage	Store in original containers in dry conditions between +5°C and +25°C.
Shelf life	12 months
Coverage (for estimating purposes only. No allowance for wastage, etc.)	

The number of units can be calculated by using the formula

$$\frac{\text{cross section of joint (mm}^2\text{) x length (m)}}{\text{Volume of unit (ml)}} = \text{no. of units of Vertiseal required}$$

Ancillary Products

Primer PS	1 litre can. Approx coverage 10 m ² .
Grace LB Paddle	Unit
Follower Plate	Unit
Solid Barrel Gun	Unit
Plastic Nozzle	Unit

Complementary Materials

Filler Boards Aerofil®, Korkpak®, in various thickness.

Equipment by Others

Wire brush, heavy duty 500 r.p.m. electric drill, palette knife, masking tape, bond breaker tape, tool cleaner, paint brush for priming.

Surfaces	Treatment
Concrete & Masonry	Surfaces must be clean and dry. Wire brush thoroughly and remove all dust and contaminants. Prime with Primer PS .
Metals	Remove any corrosion or millscale by grit or shot blasting, wire brush, grinder or chemical remover. Degrease the surfaces with clean cloths and oil free cleansing solvent. Prime with a non porous surface primer (contact Grace for advice).
Glass and Glazed Materials	Thoroughly clean the surfaces with clean cloths and oil free cleansing solvent. Prime with a non porous surface primer.
Coated Surfaces	Where feasible, coatings should be removed and the surfaces treated and primed as above.

Performance

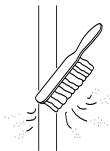
Vertiseal CE	
Pot Life at 23°C	60 minutes
Shore A Hardness	10 - 20
Operating Temperatures	-30°C to +70°C
Installation Temperature	+5°C to +50°C
Specification Compliance	BS 4254:1983, except working life. UK WBS Listed
Movement accommodation factor	25%
transverse	+/- 12.5%
shear	+/- 50%

Based on a joint width to depth ratio of 1.5:1.

Joint Preparation

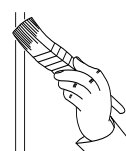
Installation

- Prepare surfaces as above.
- Apply masking tape and bond breaker tape where required, before priming.



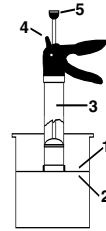
Priming

- Use correct Primer as above. Do not prime below 5°C.
- Apply single coat of Primer using a paint brush, working the Primer well into the surface and ensuring complete coverage. Brush out well to avoid a thick coating.
- Apply sealant after one hour but within 24 hours. Refer to instructions on Primer tins.



Mixing

- Mix and use immediately one complete unit at a time.
- Mix for 5-10 minutes at 500 rpm with a Grace LB Paddle, moving paddle through the mass of material until completely streak free.
- Periodically scrape down sides and base of container with a palette knife to ensure all of the curing agent is blended thoroughly with the base compound.



Loading the Solid Barrel Gun

- Position follower Plate (1) over mixed sealant using a paper barrier (2) if required.
- Position barrel of gun (3) over Follower Plate.
- Place one hand over the handle of the gun so that the catch (4) is released, force downwards, while withdrawing the plunger (5) to draw sealant into the gun.
- Finally, screw the nozzle onto the gun and cut to size.



Application

Do not use below +5°C

- Gun sealant into joints using an even trigger pressure.
- Clean nozzle occasionally to avoid contamination.
- Use a wet spatula to compact the sealant into the joint and to obtain a smooth polished finish.
- Remove any masking tape immediately after applying Vertiseal CE.

Polymer sealants can swell when immersed in water and should be recessed below the surface to permit this increase in volume.

Allow 7 days curing at +7°C and above before immersion in any liquid for Vertiseal CE and 14 days for Vertiseal CE HC. It may be necessary to provide drainage in the storage tanks during this time to prevent immersion.

Health And Safety

For Vertiseal CE and Primer PS read the product label and Material Safety Data Sheet (MSDS) before use. Users must comply with all risk and safety phrases. MSDS's can be obtained from Grace Construction Products or from our web site at www.graceconstruction.com.

There is no legal requirement for a Material Safety Data Sheet for Grace LB Paddle, Follower Plate, Solid Barrel Gun, Plastic Nozzle or Filler Boards. For health and safety questions on this products please contact Grace Construction Products Limited.

NBS Specification Clause

Refer to Clause E40 530.

 Visit our web site at www.graceconstruction.com

Grace Construction Products Ltd, Ajax Avenue, Slough, Berkshire SL1 4BH United Kingdom Tel +44 (0)1753 692929 Fax +44 (0)1753 691623

Adcor, Aerofil, BETEC, Bituthene, Hydproduct, Insupak, Korkpak, Paraflex, Paraseal, Preprufe, Procor, Servised, Servidek, Servigard, Servijoint, Servimastic, Servipak, Servirufe, Serviseal, Servistrip, Servitite, Vertigard and Vertiseal are registered trademarks of W R Grace & Co.-Conn. Adprufe, Armourtape, Bitustik, Bitutape, Hydropaste, Pak Adhesive, PVC Edgetie, Serviband, Serviflex, Servitape, Slipstrip, and Solarshield are trademarks of W R Grace & Co.-Conn.

The information given is based on data and knowledge considered to be true and accurate and is offered for the user's consideration, investigation and verification. Since the conditions of use are beyond our control we do not warrant the results to be obtained. Please read all statements, recommendations or suggestions in conjunction with our conditions of sale including those limiting warranties and remedies which apply to all goods supplied by us. No statement, recommendation or suggestion is intended for any use which would violate or infringe statutory obligations or any rights belonging to a third party.

Copyright 2006. Grace Construction Products Limited.

Printed in England - 05.06- Ref. SC001C

GRACE
Construction Products