



CI/SfB

Yt3

AUGUST 2006
PRODUCT DATA SHEET

ARDEX D 20

Ready Mixed Wall Tile Adhesive

Features

Ideal for use in kitchens, bathrooms and domestic showers

No primer required – save time and money

Up to 20 minutes open time

Up to 40 minutes tile adjustability

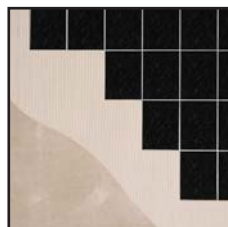
Excellent adhesion

Non-slip and easy to use

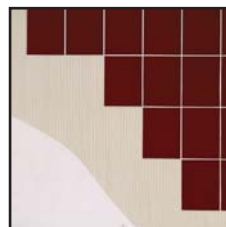
Suitable for all tile types including porcelain



D 20 tiling
on tiles



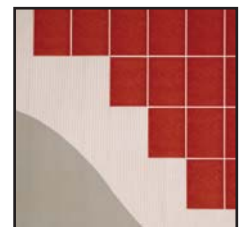
D 20 tiling
on plaster



D 20 tiling on
plaster board



D 20 tiling
on timber



D 20 tiling
on rendering



Reg No. FM 1207

ARDEX UK LIMITED
Homefield Road, Haverhill, Suffolk CB9 8QP UK.
Telephone: +44 (0)1440 714939
Fax: +44 (0)1440 716660
Technical Services Fax: +44 (0)1440 716640
Email: technical.services@ardex.co.uk
ARDEX online: www.ardex.co.uk

ARDEX D 20

Ready Mixed Wall Tile Adhesive

DESCRIPTION

ARDEX D 20 is used in dry internal locations for fixing ceramic tiles and mosaics on gypsum plaster, paper faced-boards, concrete, cement and sand renders, rigidly braced and stable sheets and boards, e.g. plywood, chipboard, fibre building boards etc., and other absorbent backgrounds, as well as fixing porous tiles to existing ceramic tiling. Suitable for use in domestic showers and bathrooms on appropriate backgrounds, i.e. moisture resistant plaster-board, cement and sand render etc.

APPLICATION

Ensure that the substrate is mature, sound, dry and free of dust, dirt, oil, grease and other surface contamination. Use ARDEX DGR degreaser to remove oil, wax, grease etc.

Weakly adhered paint coatings, whitewash and other friable materials should be removed. Plaster surfaces that are dry and firm can be tiled directly with ARDEX D 20, but in all cases the plaster must be of sufficient strength to carry the weight of the tiling. Ensure any trowelled-in plaster dust is removed using a stiff brush. Over-trowelled or water flashed plaster will require light wire brushing to remove the weak surface film prior to fixing.

In frequently used showers, e.g. changing rooms and in power showers, use ARDEX D 30 Commercial and Domestic Ready Mixed Wall Tile Adhesive. In these wetter locations, the background to be tiled onto should be suitable for use in showers, i.e. cement and sand render, or proprietary water resistant, stable tilebacking boards. If a waterproof protection coat is required to prevent ingress of moisture into the background the surface should initially be treated with ARDEX S 1-K Ready Mixed Waterproof Coating for domestic locations or ARDEX WPC Rapid Setting Waterproof Coating for both commercial and domestic areas, prior to fixing porous bodied tiles with ARDEX D 30 Commercial and Domestic Ready Mixed Wall Tile Adhesive.

In permanently wet locations e.g. swimming pools and external locations, use the appropriate ARDEX or ARDEX-FLEX cement-based adhesives.

FIXING TECHNIQUE

ARDEX D 20 adhesive is applied to give a uniform coating on the area being tiled and then combed through with a notched trowel to give a straight ribbed adhesive bed into which the ceramic tiles are bedded.

Apply only sufficient adhesive to the surface to cover an area that can be tiled within 20 minutes. This area will depend on the absorption of the substrate and site conditions (temperature, humidity etc.). The high initial grab of ARDEX D 20 is such that battens and spacers are generally not required.

In wet areas the adhesive coverage should be checked occasionally to ensure that a solid bed of adhesive is achieved which may require buttering of the tile back immediately prior to fixing.

NOTE: The maximum weight of tiling per square metre on gypsum plaster is 20kg and for plaster-board is 32kg.

GROUTING

Grout the tiles when the ARDEX D 20 has hardened, i.e. 24 hours after fixing. We recommend the use of ARDEX or ARDEX-FLEX cement-based grouting compounds for general tiling. Allow up to 3 days before grouting when fixing on impervious or non-porous backgrounds.

Movement joints should be incorporated as advised in BS 5385-1 i.e.

over existing and/or structural movement joints;

where tiling abuts other materials;

where tiling is continuous across junctions of different background materials;

in large tiled areas, at internal vertical corners and at 3m to 4.5m centres horizontally and vertically;

where stresses are likely to be concentrated, for example at changes of alignment.

COVERAGE

Approximately 1 litre per m² using a 3mm x 3mm toothed and notched trowel.

PACKAGING

ARDEX D 20 is packed in plastic tubs - 10 litres, 5 litres or 2¹/₂ litres net volume.

STORAGE AND SHELF LIFE

Store out of direct sunlight. Protect from frost. ARDEX D 20 has a storage life not less than 12 months if stored in original unopened containers.

PRECAUTIONS

ARDEX D 20 is non-hazardous in normal usage, however, good hygiene practices should be followed. Avoid contact with skin, wash off with soap and water before drying takes place.

In case of contact with eyes, rinse carefully and thoroughly with water and seek medical advice. In case of ingestion seek medical help.

For further information consult the relevant health and safety data sheet.

TECHNICAL DATA

Paste colour: off white

Density of ARDEX D 20 adhesive: approximately 1.6kg/litre

Adhesive bed thickness: maximum 3mm

Setting time: 24 hours

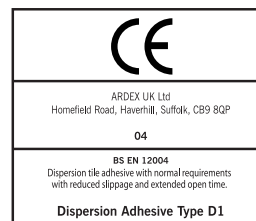
pH value: approximately 9

PROPERTIES TESTED TO BS EN 12004

Slump Resistance: Slip - less than 0.5mm

Shear Adhesion Strength

Initial shear strength: not less than 0.5 N/mm²



NOTE: The information supplied in our literature or given by our employees is based upon extensive experience and, together with that supplied by our agents or distributors, is given in good faith in order to help you. Our Company policy is one of continuous Research and Development; we therefore reserve the right to update this information at any time without prior notice. We also guarantee the consistent high quality of our products; however, as we have no control over site conditions or the execution of the work, we accept no liability for any loss or damage which may arise as a result thereof.